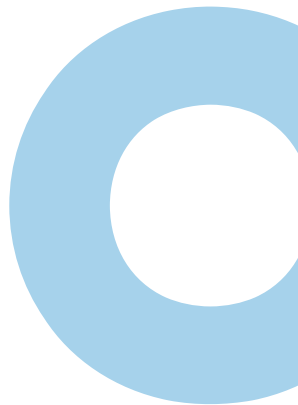


Korea Maritime & Ocean University

Guideline for International Students



Undergraduate School

College of Maritime Sciences

Div. of Navigation Convergence Studies

Shipping Operations Management
Maritime Law and Marine Insurance
Maritime Safety
Intelligent Navigation Systems
Global Maritime Studies

Div. of Marine System Engineering

Green Ship Technology
Smart Ship Technology
Marine Engine and Advanced Materials

Div. of Coast Guard Studies

Navigation
Engineering

Div. of Maritime AI & Cyber Security

AI
Cyber Security

College of Maritime Humanities & Social Sciences

Div. of Shipping Management

Shipping Management
Shipping Management Information Systems and Finance

Div. of Maritime Law

Law
Maritime Law

Div. of International Trade and Economics

International Trade
Economics and Finance

Dept. of International Relations

Dept. of Public Maritime Administration

Dept. of English Language and Literature

Dept. of East Asian Studies

College of Ocean Science and Engineering

Div. of Naval Architecture and Ocean Systems Engineering

Dept. of Ocean Engineering

Dept. of Energy & Resources Engineering

Dept. of Oceanic Architectural Engineering

Div. of Convergence on Marine Science

Marine Ocean Science
Marine Biotechnology
Aquatic BioScience

Dept. of Marine Sport Sciences

Div. of Mechanical Engineering

Mechanical Systems Engineering
Refrigeration and Air-Conditioning Engineering

Div. of Electronics and Electrical Information Engineering

Electrical and Electronics Engineering
Electronics and Communications Engineering
Nano-Semiconductor Engineering
Radio Mobility Convergence Engineering
Data Science

Div. of Artificial Intelligence Engineering

Intelligent Control Systems Engineering
Computer Engineering

Dept. of Logistics System Engineering

Dept. of Environmental Engineering

Dept. of Civil Engineering

Dept. of Ocean Advanced Materials Convergence Engineering



Graduate School

• Master's and Doctoral Programs •

Engineering

Dept. of Maritime Law & Policy

Maritime Law
Maritime Policy

Dept. of Marine Systems Engineering

Machine and Materials Engineering
Ship Machinery-Energy Systems Engineering
Ship Electrics and Electronics Control Engineering

Dept. of Navigation Science

Maritime Safety Technology
Maritime Traffic Information

Dept. of Marine Engineering

Mechanical Fusion & Material Engineering
Green Ship Technology
Mechatronics Engineering

Dept. of Coast Guard Studies

Maritime Police Administration
Maritime Safety & Environment

Dept. of Maritime AI & Cyber Security

Offshore Plant Management
Maritime AI and Humanities
Maritime Cyber Security

Dept. of Marine Information Technology

Smart Systems Engineering
Information Technology Engineering

Dept. of Mechanical Engineering

Dept. of Naval Architecture and Ocean Systems Engineering

Dept. of Electronics and Communications Engineering

Dept. of Ocean Engineering

Dept. of Ocean Energy and Resources Engineering

Energy and Resource Engineering
Ocean Energy Engineering

Dept. of Logistics

Dept. of Control and Instrumentation Engineering

Dept. of Advanced Materials Convergence Engineering

Dept. of Refrigeration and Air-Conditioning Engineering

Dept. of Electrical and Electronics Engineering

Dept. of Radio Communication Engineering

Dept. of Civil Engineering

Dept. of Environmental Engineering

Dept. of Computer Engineering

Dept. of Nano-Semiconductor Engineering

Dept. of Oceanic Architectural Engineering

Architectural Design
Disaster Prevention of Offshore Structures

Dept. of Convergence Interdisciplinary Education of Maritime & Ocean Contents

Convergence of Maritime & Ocean City Design
Logistics System

Engineering

Dept. of Advanced Ship Management Convergence

Advanced Ship Operations Management
Advanced Ship Technology Management

Natural Sciences

Dept. of Data Informatics

Dept. of Marine BioScience and Environment

Marine Biotechnology
Marine Environmental Science
Aquatic BioScience

Dept. of Convergence Interdisciplinary Education of Maritime & Ocean Contents

Maritime & Ocean Biotechnology

Humanities & Social Sciences

Dept. of Shipping Management

Dept. of Maritime Law

Private Law
Public Law
Maritime Law

Dept. of Maritime Economics

International Trade
Economics

Dept. of English Language and Literature

English Linguistics
English Literature

Dept. of Public Policy

International Policy
Maritime Administration

Dept. of International Area & Cultural Studies

East Asian Studies
Maritime History and Culture
Cultural Interaction Studies

Dept. of Convergence Interdisciplinary Education of Maritime & Ocean Contents

Convergence of Maritime & Ocean Culture-Contents

Arts & Sports

Dept. of Sports Convergence

Marine Leisure Industry
Sports Medicine
Ocean Safety (Master's only)

Dept. of Convergence Interdisciplinary Education of Maritime & Ocean Contents

Maritime & Ocean Health Care

A Globally Prestigious University Specialized in the World of Seas



• Introduction:

Nestled on Jodo Island, in Busan, South Korea's second-largest city and largest port, Korea Maritime & Ocean University (KMOU) is a beacon of maritime excellence with a rich history dating back to 1919. Our journey began as the Jinhae Advanced Maritime Training Institute, and we were established as the first national university after Korea's liberation in 1945. Over the years, we have evolved into a comprehensive university dedicated to advancing maritime and ocean-related studies.

• A Legacy of Maritime Leadership:

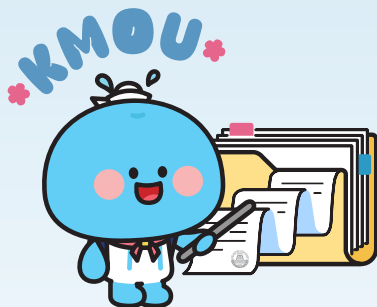
KMOU is a leading university in South Korea specializing in maritime affairs. We are dedicated to training the next generation of global ocean leaders, driving advanced research, and fostering collaboration between academia and industry. Our university has played a pivotal role in propelling South Korea to become a top 10 maritime power globally. We are committed to pushing the boundaries of maritime science and ensuring a sustainable future for the world's oceans.

• Vision for the Future:

KMOU is poised for continued growth and development, aiming to be a world-class research-oriented university. We envision ourselves as a guiding institution, leading the way in the new era of oceans, actively participating in government programs and serving as a vital think tank for maritime issues.



- ✓ Selected as 'A university for the Global Korea Scholarship (GKS) Degree Course'
- ✓ IEQAS(International Education Quality Assurance System) Certified University by the Ministry of Education
- ✓ Selected as a 'GKS ASEAN National University Student Invitation Training Institution'
- ✓ Selected as an operating institute for 'Global Maritime and Fisheries University Students Invitation Training'
- ✓ Selected for the 'Campus Asia AIMS' Project with ASEAN National Universities



Established in
1945



No. **4**

relatively lower tuition fees
compared to the public
universities in South Korea



2.78
million won

average amount of
annual scholarship
grant per student



75.8 %

the percentage of
the 2023 graduates
who found a job



Degree Course Admission

Application Process



Admission Info.

Item		Key contents
Under-graduate School	Nationality and Educational Requirements	Applicant must be a high school graduate (or expected to graduate from high school) Applicant, and his/her parents all must be foreigners.
	Language Requirement	Grade 3 in TOPIK or completed a Korean language course in a university with level 3 or higher.
	Submission of Application	<ul style="list-style-type: none"> December or January next year (admission for March of the following year) How to submit your applications: Via the Internet (www.studyinkorea.go.kr) ※ If there is a call for application for additional openings: Submission of applications in January next year (to be followed by interviews)
	Selection Method	Interview
Graduate School	Nationality and Educational Requirements	A foreigner who completed educational programs which are equivalent to South Korea's elementary school, middle school, high school, and undergraduate school. <ul style="list-style-type: none"> Master Degree: A (expected) holder of a bachelor's degree from a four-year university in South Korea or other countries Doctor Degree: A (expected) holder of a master's degree from a university in South Korea or other countries or whose degree is pending
	Language Requirement	<ul style="list-style-type: none"> To meet one of the following requirements - TOEFL iBT 68 points, TOEIC 600 points, TEPS 279 points, IELTS 5.5 points, or TOPIK Grade 3 ※ A student with a recommendation from his/her future advising professor can apply even without the above-mentioned language scores.
	Submission of Application	<ul style="list-style-type: none"> 1st round of submission (admission for March): November through December 2nd round of submission (admission for September): May through June
	Selection Method	Documentary Screening

* The final binding conditions and requirements for admissions shall be as per the application guideline of the year.



International Students Support Programs



1 Korean Cultural Experience Program

4 International Students' Day

7 Allowance for students with a TOPIK grade

2 Taekwondo Experience

5 KMOU BUDDY and Mentoring Program

8 Freshmen Orientation and Early Adaptation Program

3 International Students' Career and Job Program

6 KMOU Global Cultural Experience



Scholarships for International Students

Course	Item	Scholarship Program	Eligibility	Amount of Scholarship
Under-graduate School	Freshmen (The first semester after entry)	Entry Scholarship A	TOPIK Grade 4 ~ 6 or TOEFL iBT 80 ~ 100 or higher or IELTS Band 6.0 ~ 7.0 or higher	40% ~ 100% of the tuition
		Entry Scholarship B	Freshmen who have completed at least two semesters of Korean language programs in KMOU, with TOPIK grade 3 or higher and recommendation by the Dean of Office of International Affairs	20% of the tuition
	Existing students	International Students Scholarship	<div>[Common Criteria]</div> <div>- Students who took 12 credits or more in the last semester without any Fs in any courses</div> <div>- TOPIK Grade 4 or higher</div> <div>[Grade Criteria]</div> <div>Average GPA in the last semester 2.0 ~ 3.8 or higher</div>	40% ~ 100% of the tuition
Graduate School	Freshmen (The first semester after entry)	Entry Scholarship A	TOPIK Grade 4 ~ 6 or TOEFL iBT 80 ~ 100 or higher or IELTS Band 6.0 ~ 7.0 or higher	The scholarship is to be provided within the limit of the budget
		Entry Scholarship B	Recruits who have completed at least two semesters of Korean language programs of our institution, with TOPIK grade 3 or higher and recommendation by the Dean of Office of International Exchange Center	
	Existing students	International Students Scholarship	<div>[Common Criteria]</div> <div>Students who took at least 6 credits in the last semester with an average grade of 4.0 or higher (No courses with a C or lower)</div> <div>[Language Requirements]</div> <div>TOPIK Grade 4 ~ 6 or TOEFL iBT 80 ~ 100</div>	
		Academic Excellence Scholarship	Students with outstanding grades, without exceeding the limitation for the years of enlistment	Partial scholarship (within the budget of the year)

* Note: Recipients of Supervising Professor Scholarship are excluded from these scholarships



Global Korea Scholarship (GKS) Program

- 1. Eligibility:** Undergraduate students or graduate students(master's/doctoral programs) who applied for KMOU
- 2. Application period:** One year for Korean language training + four years in the undergraduate program, two years for the master's degree program, three years for the doctoral program
- 3. Admission process**
 - University Track** 1st Round of Selection (Application submitted to the university and recommendations made)
 - ⇒ 2nd Round of Selection (Selection by the NIIED) ⇒ Final pass
 - Embassy Track** 1st Round of Selection (Public application submitted to the college and recommendations made)
 - ⇒ 2nd Round of Selection (Selection by the NIIED and the college) ⇒ Final pass
- 4. Scholarship:** Covers the living expenses and tuition fees during studying in Korea



Tuition

Undergraduate School (per semester)

2,248,000 KRW College of Maritime Sciences (Natural Sciences)	2,248,000 KRW College of Ocean Science and Engineering (Natural Sciences)	2,147,000 KRW College of Ocean Science and Engineering (Science and Art, Sports)	1,792,000 KRW College of Maritime Humanities & Social Sciences (Humanities and Social Studies)
---	---	--	--

Graduate School (per semester)

2,754,500 KRW Engineering	2,629,500 KRW Science	2,629,500 KRW Arts and Sports	2,172,500 KRW Humanities and Social Sciences
------------------------------	--------------------------	----------------------------------	---

* The final binding conditions and requirements for admissions shall be as per the application guideline of the year.



KMOU Korean Language Institute

1. Program Overview

- ◆ **Semesters:** March, June, September, December (4 intakes per year, 10 - week courses)
- ◆ **Curriculum:** Intensive training in speaking, listening, writing, reading, and grammar
- ◆ **Special Feature:** Korean cultural experience activities offered each semester

2. Admission Process: Submit application documents (3 months before semester start) ⇒ Document review
 ⇒ Interview ⇒ Announcement of qualified students ⇒ Tuition payment ⇒ Issuance of admission letter ⇒ Visa application ⇒ Entry into South Korea

3. Scholarship Opportunities

- ◆ **Academic Excellence Scholarship for current students:** 5 - 20% tuition support for top 30% performers
- ◆ **Entrance Scholarship for freshmen:** 10 - 20% first semester tuition support based on TOPIK scores

4. Cost Information

- ◆ **Tuition:** 1,200,000 KRW (per semester)
- ◆ **Dormitory fee:** 5,000 KRW (per day)
- ◆ **Admission fee:** 100,000 KRW (one-time)

5. Our KLI Facilities



¹ Korean language classroom

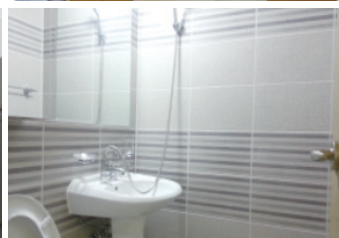


² Dorm room (for four tenants)



³ Dorm room (for two tenants)

Dormitory



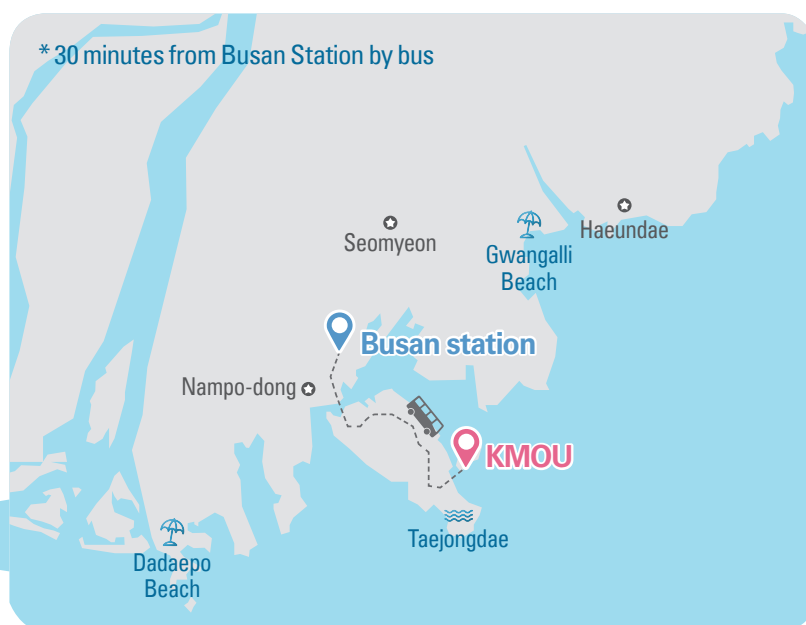
- A-chi Hall (for graduate students only) [dorm fees for a semester](#) | approx. 1,345,000 KRW ~ 1,748,000 KRW One-person room
- Ara Hall, Hyecho Hall (studio type) [dorm fees for a semester](#) | approx. 1,083,000 KRW ~ 1,682,000 KRW Two-person room

※ Dorm fees include utilities, administration fees, and meals. (As per the final confirmed dormitory fees of the year)

Famous Tourist Spots of **Busan**



How to **Reach Us**



by **PLANE**

50
mins



by **KTX**

2:30
hrs mins

Inquiries

Undergraduate Admission

| +82-51-410-5176 | iadm@kmou.ac.kr

Graduate Admission

| +82-51-410-5120 | graduate@kmou.ac.kr

Korean Language Institute

| +82-51-410-4774 | kmoukli@kmou.ac.kr



KMOU
Promotional
video



KMOU
International
student stories

National Korea Maritime & Ocean University

Korean Language Institute

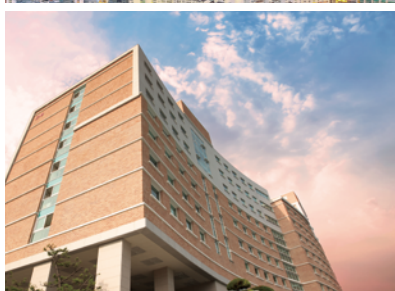
Korean Language Program Application Guideline



韩国海洋大学
韩国语教育院 语言班 招生简章



TRƯỜNG ĐẠI HỌC HÀNG HẢI HÀN QUỐC
QUÁ TRÌNH TUYỂN DỤNG KHÓA
HỌC TIẾNG HÀN CHÍNH QUY



한국어교육원 한국어학연수 정규과정 모집요강



국립 한국해양대학교 한국어교육원
国立韩国海洋大学 韩国语教育院
KOREAN LANGUAGE INSTITUTE NATIONAL KOREA MARITIME & OCEAN UNIVERSITY

Leading the New Era of Ocean in 21st Century

The Only Global & Ocean-Specialized University in South Korea

Introduction of KMOU

Being founded after the liberation of Korea in the year of 1945, National Korea Maritime & Ocean University (KMOU) is the earliest and among most prestigious national universities in Korea. KMOU has indeed opened up Korea to unprecedented access of global linkages, awaking us to the importance of human reliance on maritime as well as leading us towards probing the indefinite possibilities that ocean could bring about. Throughout the years, National Korea Maritime & Ocean University has been delicately integrating humanities, sociology, science, sports and maritime knowledge in order to build Korea as a strong seafaring nation with glorious future by training personnel who are specialized in maritime technology and ocean research. Taking a role as a national university, KMOU will make its painstaking efforts in executing its mission to contribute to the society and nation, while at a larger extent, the global. KMOU will do its best to pioneer a series of innovative researches as well as to cater comprehensive education for the youths in order to cultivate outstanding maritime professionals with global leadership.



- Selected as 'a university for Government-Invited Foreign Scholarship (GKS) Degree Course'
- IEQAS (International Education Quality Assurance System) Certified University by Ministry of Education
- Selected as 'GKS ASEAN National University Student Invitation Training Institution'
- Selected as an operating institute for 'Global Maritime and Fisheries University Students Invitation Training'
- Selected for 'Campus Asia AIMS' Project with ASEAN National University

Enrollment Guide

Students who have completed Korean Language Program at Korean Language Institute of National Korea Maritime & Ocean University (KMOU) could further their studies on undergraduate or graduate courses in KMOU. KMOU enrolls new international students every year (March). Students who attain Grade 3 and above in TOPIK (Test of Proficiency in Korean) or have passed Level 3 Class in Korean Language Institute are qualified to apply for undergraduate course. Korean Language Institute will spare no effort in assisting the students to have wonderful memories while studying in Korea!

college	faculty	major
College of Maritime Science	Division of Navigation Convergence Studies	Shipping Operations Management, Maritime Law and Marine Insurance, Maritime Safety, Ship Operation, Maritime Cultural Interaction
	Division of Marine System Engineering	Green Ship Technology, Maritime Autonomous Surface Ship, Safety Management
	Department of Coast Guard Studies	
	Division of Maritime AI & Cyber Security	Artificial Intelligence, Cyber Security
College of Ocean Science and Engineering	Division of Ocean and Ship Engineering	Naval Architecture and Ocean Systems Engineering, Ocean Engineering
	Division of Oceanic Architecture-Energy and Resources Engineering	Energy and Resources Engineering, Architectural Engineering for Disaster prevention, Architectural Space Design
	Division of Convergence on Marine Science	Marine Biotechnology, Aquatic BioScience
	Division of Mechanical Engineering	Mechanical Systems Engineering, Refrigeration and Air-Conditioning Engineering
	Division of Electronics and Electrical Information Engineering	Electrical and Electronics Engineering, Electronics and Communications Engineering, Electronic Material Engineering, Radio Communication Engineering, Data Science
	Division of Control and Automation Engineering	Control and Instrumentation Engineering, IT Convergence
College of Humanities & Social Sciences	Division of Civil, Environmental Engineering and Logistics System	Logistics, Environmental Engineering, Civil Engineering
	Division of Maritime Management and Economics	Shipping Management, Maritime Information and Finance, International Trade, Economics
	Division of Maritime Law and Public Administration	Law, Maritime Law, International Relations, Maritime Administration
Graduate Schools	Division of Humanities	English Language and Literature, East Asian Studies
	Graduate School of General Studies / Ocean Science and Technology School / Graduate School of Maritime Industries / Graduate School of Maritime Finance / Graduate School of Shipping Finance & Logistics	

KMOU Korean Language Institute

Korean Language Program

I. Introduction

1. Class and Application Schedule (4 semesters/year)⁽¹⁾

Semester	Class Period	Application Period		Class Duration
		Applicants (Applying for D-4 Visa)	Applicants With Visa (eg. C-3, D-4)	
1 st Semester	Early March ~ Mid May	Previous Year December ~ January	Deadline: two weeks before each semester begins	10 weeks (200hrs)
2 nd Semester	Early June ~ Mid August	March ~ April		
3 rd Semester	Early September ~ Mid November	June ~ July		
4 th Semester	Early December ~ Next year Mid February	September ~ November		

(1) Please be aware that the above schedule is subject to change. Please make an inquiry before application

2. Class Time: 5 days (Monday to Friday) per week, 4 hours (9:00 to 12:50) everyday

※ Cultural activities every year: Korean Food, Taekwondo, Traditional Costume Experience, and more.



3. Fees

Contents	Registering for 2 semesters (6 months)		Registering for 4 semesters (1 year)		Remarks
	Korean Won	Dollar	Korean Won	Dollar	
Admission Fee	100,000 KRW	85 USD	100,000 KRW	85 USD	
Tuition Fee	2,400,000 KRW	2,040 USD	4,800,000 KRW	4,080 USD	Textbook Fee not included
Dormitory Fee	900,000 KRW	770 USD	1,800,000 KRW	1,540 USD	
Meal Fee	Approx. 1,350,000 KRW	1,160 USD	Approx. 2,700,000 KRW	2,320 USD	Three Meals a Day *Optional
Health Insurance Fee	First 6 months: Private health insurance (6 ~ 70,000 KRW/6months) / After: National Health Insurance Service (40,000 KRW/month)				Mandatory for ALL Int'l Students

▶ Payment Information

• Bank Account

- Bank Name: Nong-hyup Bank, Korea Maritime and Ocean University Branch, Busan, Korea
- Account Number: 904-01-004086
- Swift Code: NACFKRSEXXX
- Remittee: Institute of Korean Language Education, Korea Maritime and Ocean University

※ Note: Students must pay fees in Korean currency.

4. Scholarships

▶ Korean Language Course Scholarship

Category	Qualification	Amount	Remarks
Academic Excellence Scholarship	Students with average grade ranked 1 st ~ 3 rd in each class	1 st : 20% of tuition fee 2 nd : 10% of tuition fee 3 rd : 5% of tuition fee	Subject to change
Entrance Scholarship	Newcomers with TOPIK 1, 2 (Test of Proficiency In Korean)	Level 1: 10% of tuition fee Level 2: 20% of tuition fee	

▶ Undergraduate Scholarship

① Freshmen

Category	Qualification	Amount
Freshmen Scholarship A	TOPIK level 6 / TOEFL iBT 100 / IELTS Band 7.0 or above	100% of tuition fee
	TOPIK level 5 / TOEFL iBT 90 / IELTS Band 6.5 or above	80% of tuition fee
	TOPIK level 4 / TOEFL iBT 80 / IELTS Band 6.0 or above	40% of tuition fee
Freshmen Scholarship B	<ul style="list-style-type: none"> Student from KMOU Korean Class Studied 2 semesters or more Achieved TOPIK level 3 Recommendation from Director of Center for Int'l Affairs 	20% of tuition fee

② Registered student

Category	Qualification		Amount
Foreign student Scholarship	<ul style="list-style-type: none">· Achieved 12 credit or above in last semester· No subject with F score· TOPIK level 4 or above	Average grade above 3.8	100% of tuition fee
		Average grade above 3.0	80% of tuition fee
		Average grade above 2.0	40% of tuition fee

5. Facilities

• Education



Entrance of International Cooperation Building



Korean Language Classrooms(1)



Korean Language Classrooms(2)

• Living



Dormitory (Room for 4 persons)



Dormitory (Room for 2 persons)



Dormitory (Room for 1 person)



Washing and Drying Machine



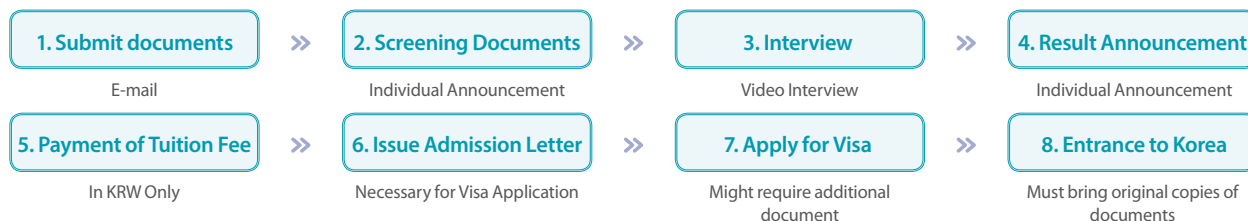
Water Purifier, Refridge, Microwave

KMOU Korean Language Institute

Korean Language Program

II. How to Apply for Korean Language Course

1. Application Procedure



2. Admission Qualification

- Applicant with a high school graduate certification or has attained the equivalent level of education
- The applicant as well as his or her parents are not citizens of Korea; or Koreans who are currently staying abroad

3. Types of Applicants

- Type 1: Applicants who belong to "21 Countries Announced by Minister of Justice" and who need D-4 visa
- Type 2: Applicants who do NOT belong to above countries and need D-4 visa (including China)
- Type 3: Applicants who already have visa (eg. C-3, D-4)

4. Required Documents for Application

(1) Type 1 & 2 (Those who need D-4 visa to enter Korea)

NO.	Name of Document	Content	Remarks
1	Application Form, Written Oath	Must contain Applicant's real signature	School Form
2	Oath of Residency in KMOU	1-year-residency and 6-month-meals in KMOU are obligatory; If violated, he/she cannot study in KMOU	
3	Self-Introduction and Study Plan		
4	Graduation Certificate of the most recent education		Apostille or Notarization after Translation in Korean/English
5	Transcript of the most recent education	Also submit Attendance Book	
6	Certificate of Enrollment or Graduation at University		Applicants who are now studying or has graduated from university
7	Transcript of University		
8	Certificate of Studying or Working	* Refer to note below this table	** Refer to note below
9	Financial Guarantor's Occupation Certification and Income Statement	Company's name, job title, year salary, contact information of working place including the address (verified by the company)	Translation in Korean/English
10	Bank Statement (more than \$10,000) Original Copy	Account should be frozen for over 1 year as of Application date	
11	Affidavit of Financial Support		School Form
12	Certificate of Kinship		Translation in Korean/English
13	Copy of Applicant's Passport		
14	4 Photos (size: 3.5cm*4.5cm)		White background
15	Letter of Guarantee	This applies only when the GUARANTOR is related with KMOU (international student or Korean)	School Form

* Certificate of Studying or Working: A Certificate or a proof which proves the applicant took classes in a certain institute or had a job after high school graduation. The institution or company name, address, period of studying or working must be included.

** This document is required for applicants who are 1) not studying in any university now AND who has been 2) more than 6 months after the applicant's high school graduation.

(3) Type 3 (Applicants who already has visa (eg. C-3, D-4))

- Application Form: 1) This only applies to those who are admitted for 90 days stay in Korea

2) If you plan to change your visa to D-4, there are additional required documents (PLEASE inquire before application!)

- Passport: Both Personal Information Page and Visa (C-3) Page

5. Screening and Evaluating Candidates

- The selection of successful applicants will be based on comprehensive evaluation of document screening and interview session.

- Step 1. Documents Screening

- Committee members will evaluate based on the applicant's submitted documents

- Step 2. Interviews

- Applicants who reside in Korea: It will be held in-person at KMOU campus
- Applicants who stay abroad: Video / Phone Interview

- Successful Applicants: will be selected upon his/her Study Ability, Financial Ability for studying abroad, Self-Introduction and Study Plan.

6. Contacts

- Mailing Address: International Exchange & Cooperation Building (D8), 727 Taejong-ro, Yeongdo-gu, Busan, Republic of Korea

- Tel: +82-51-410-4774

- E-mail: ahyoung9205@kmou.ac.kr

- Website: <http://global.kmou.ac.kr>

