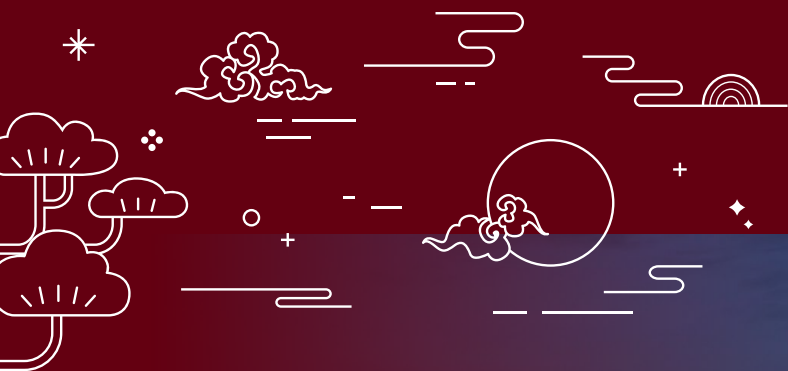


STUDY IN KOREA



As the center of Northeast Asia, the Korean peninsula is surrounded by sea on three sides except for the north, which is adjacent to the continent.

China is located across the Yellow Sea to the west and Japan is located across the East Sea to the east.





* KOREA



Official Name : Republic of Korea

Capital : Seoul

Language : Korean

Area : 10,044,355.4 ha

Population : 51,648,564

GDP(per capita) : 35,563 dollars

Currency : Korean Won (KRW, ₩)

Climate : Continental monsoon climate with distinct four seasons

Religion : Christianity, Catholicism, Buddhism, etc.

Politics : Liberal democracy with a presidential system

Korea has abundant large/small islands and marine resources as it faces the sea. The mountainous area is 70% of the land and there are a lot of beautiful mountains and national parks. With 30% of flat land, a lively rural area and developed cities are in harmony.



Live, Study, and Thrive in Korea



Korea is a place where both Koreans and
foreigners can live safely and conveniently in all areas of daily life.

World-class ICT and internet speed,
Very efficient and inexpensive public transportation,

Numerous public convenience facilities available for free,
Shopping centers full of inexpensive and high-quality goods,
Rich/healthy ingredients and delicious/inexpensive food,
Fast and accurate delivery (courier) service within 24 hours of placing an order,

Most of all, 5,000-year-old cultural relics and
beautiful traditional buildings (palaces and houses),
Internationally renowned creative and dynamic modern pop culture,
The natural environment that changes beautifully for each season.
(Spring, Summer, Fall, Winter)

Studying in Korea offers an amazing opportunity to enjoy not only an excellent
educational system and learning environment but also all of the above.

Korea

at a Glance

Korea is a global leader in education and industry, with the highest higher education attainment rate and top rankings in PISA among OECD countries. It excels in R&D investment and dominates key industries like semiconductors, innovation, and petrochemicals, making it a major exporter and the world's 13th-largest economy.



1st**Completion rate of
higher education**

1st among OECD countries

* based on 25-34 year-old, 2023

1st**OECD Program for
International Student
Assessment(PISA)**Top level among OECD
countries* 1st to 7th in reading, 1st to 2nd
in mathematics, and 2nd to 5th in
Science, 2022**1st****National industrial
digitalization rankings**

1st in the world

* BloombergNEF, 2021

1st**Memory Semiconductor
Market Shares**

1st in the world

* 60.5% OMDIA(worldwide), 2023

2nd**R&D investment
in terms of GDP**

2nd in the world

* Ministry of Science and ICT, 2023

4th**Petrochemical industry**

4th in the world

* Based on ethylene production
capacity, 2022**6th****Global Innovation Index**

6th in the world

* WIPO, 2024

6th**Global Exports**

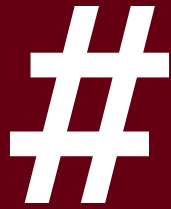
6th in the world

* Based on Ministry of Trade,
Industry and Energy, 2024**13th****Gross Domestic Product
(GDP)**

13th in the world

* IMF, 2023

Korea with Hashtags



Spoken by International Students

Korea :
A Unique Country
Where Innovation
Meets Culture





Studyinkorea_nied

View all 100 comments

5 days ago

#StudyinKorea #VisaD-2 #Koreanlanguageprogram #VisaD-4 #TOPIK #KingSejongInstitute
 #KoreanLanguageInstructor #Scholarships #GKS #DepartmentRightForMe #NoHassleReg-
 istration #CampusClubs #ExchangeStudent

#KoreanJeong #KindKoreanFriends #InternationalStudentSupporters #K-JOB #Employ-
 mentinKorea #Internship #WorkVisa #KoreanStartup #SamsungElectronics #LGElectronics
 #SKHynix #POSCO #NAVER #KAKAO #HyundaiMotors

#K-LIFE STYLE #FoodDelivery #Open24hoursConvenienceStore #SimplePaymentService
 #SamsungPay #T-money #K-METRO #High-speedInternet #KakoTalk #OnlineShopping
 #FastDelivery #220V #InternetCafe #Noraebang #BeautifulStreets #SafeLife&ConvenientLife

#K-TECH #Semiconductor #InformationCommunication #Automobilemanufacturing #Arti-
 ficialIntelligence #AdvancedTechnology #TechnologyInnovation #High-techField

#K-FOOD #DeliciousFood #KoreanDessert #Kimchi #ShinRamyun #Bibimbap #Bulgogi
 #Kalguksu #Teokbokki #Gimbap #Samgye-tang #Chicken&Beer #Jeon&Makgeolli

#K-DRAMA #SquidGame #Kingdom #ItaewonClass **#K-POP** #Idol #BTS #BlackPink

#K-Beauty #FacialMasks #FoundationCushion #BBCCream

#TravelKorea #Seoul #Mt_Namsan #Hongdae #HangangPark #Mt_Bukhansan #Insa-dong
 #Myeong-dong #Dongdaemun #GyeongbokgungPalace #HanokVillage #LotteWorld #Ev-
 erland #Gyeongju #Bulguksa #SeokguramGrotto #Chuncheon #NamIsland #Gangneung
 #TravelEastSea #Taean #WestSeaTidalFlatExperience #Busan #Haeundae #JejuIsland
 #JejuOlleTrail #Mt_Halla #Dokdo

K-WAVE

(Hallyu)



The interest of people around the world in Korean popular culture is very high.

Around the 2000s, as the popularity of Korean dramas and popular songs created a craze in Asia, the word 'Korean Wave' started to be used.

In particular, the popularity of K-pop and idol stars is spreading beyond Asia to Latin America, the Middle East, Europe, and the United States. The charm of Korean culture is rapidly spreading worldwide based on online platforms.

Recently, Korean boy group 'BTS', as well as K-movies/dramas through OTT platforms, are gaining explosive popularity around the world, causing the 'K-culture content syndrome'.

The latest edition of the Oxford English Dictionary recently added new Korean words such as K-pop, K-drama, Korean wave, and Hallyu, and mentioned as follows.

"We are all riding the crest of the Korean wave, and this can be felt not only in film, music, or fashion but also in our language."

STUDY IN KOREA

If you are planning to study in Korea, it is important to find the latest information about Korean universities and to actively communicate with relevant people.

On the Study in Korea website (www.studyinkorea.go.kr) operated by the National Institute for International Education of the Korean government, comprehensive information on studying in Korea is provided in multiple languages, and information on about 430 universities is available.

In addition, you can apply easily for admission at a desired university through online application submission.

You can also obtain various information about studying in Korea at the Study in Korea Edu-

cation Fair hosted by the National Institute for International Education. The annual online and offline fair schedule can be found on the Study in Korea website.

During the Online Education Fair, you can access detailed information about universities, majors, and even participate in one-on-one online consultations with university representatives.

In addition, Study in Korea Offline Education Fairs are held in major overseas countries and regions according to the annual schedule. By visiting the fair site in person, you can get better opportunities such as securing practical information on studying in Korea and consulting with university officials.



TOPIK

(Hangeul)



Korea has its own language. Hangeul is evaluated as a scientifically excellent character because it can record a lot of speech sounds by combining 24 consonants and vowels. The reason why Korea's illiteracy rate is so low is the usefulness of Hangeul, which anyone can easily learn and use.

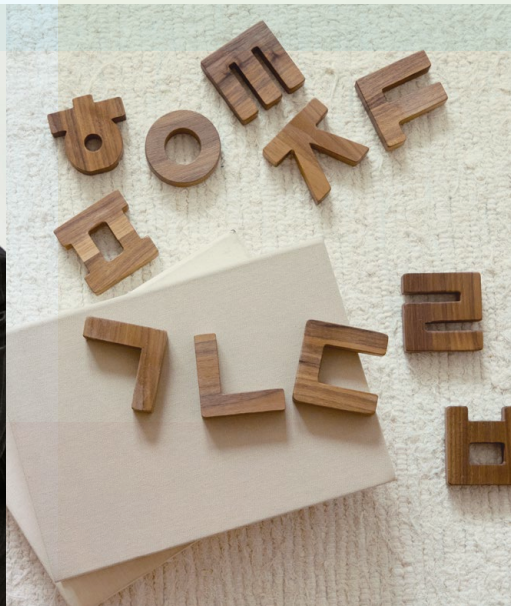
Every year, UNESCO awards the 'King Sejong (the inventor of Hangul in 1443) Literacy Prize' to a person who has contributed greatly to eradicating illiteracy in the world. As such, the excellence of Hangul is recognized by linguists around the world.

TOPIK (Test of Proficiency in Korean) is a representative Korean language evaluation test hosted by the National Institute of International Education, a national institution.

TOPIK has beginner (Level 1 to 2) and intermediate (Level 3 to 6) levels and generally, TOPIK Level 3 or higher is required to enter Korean universities and TOPIK Level 4 or higher is required for graduation (TOPIK scores are valid for 2 years). However, in the case of English track courses taught in English, there are cases where admission is possible based on English scores rather than TOPIK scores.

The TOPIK is conducted in Korea and overseas for PBT (Paper Based Test) and IBT (Internet Based Test) each held six times a year, and speaking evaluation held three times a year. For detailed schedules and registration for the test, please visit the official website (www.topik.go.kr).

There are TOPIK online learning platform (www.topik.go.kr) and on-line King Sejong Institute (www.iksi.or.kr) to support Korean language learning, and you can get help by visiting the Korean Education Centers or King Sejong Institutes all available all around the world.



SCHOLARSHIP

(GKS, etc.)



The Government of Korea runs the Global Korea Scholarship Program to select excellent international students from around the world and provide opportunities to study at Korean universities.

The GKS program includes one year of Korean language training, followed by a degree program. For undergraduate degrees, a Bachelor's degree takes 4 to 6 years, while an Associate degree takes 2 to 3 years. For graduate degrees, a Master's degree takes 2 years, and a Doctoral degree takes 3 years.

※ Scholarship benefits: airfare, tuition, Korean language training fees, monthly allowance.

GKS scholarship provide round-trip airfare(economy class), tuition fees, Korean language training tuition, and monthly allowance.

The GKS application guidelines are announced in February for graduate degrees and in September for undergraduate degrees.

Beyond the GKS program, Korean universities also offer scholarships ranging from 30% to 100%, depending on the applicant's TOPIK score or academic performance. Similarly, Korean language institutions reward outstanding students with 10% to 50% scholarships.



Furthermore, various scholarship opportunities are offered by government agencies, corporations, and foundations in Korea. These scholarships aim to help international students from various backgrounds pursue their studies in Korea by offering financial support.

Details about scholarships, including the GKS program and other opportunities, can be found on the National Institute of International Education's website (www.niied.go.kr) and the Study in Korea website(www.studyinkorea.go.kr).



ADMISSION TO KOREAN UNIVERSITIES



Higher education institutions in Korea can be divided into junior colleges (2 to 3 years), universities (4 years), and graduate schools (master's/ doctoral).

Recently, as learning through online platforms has become more active, students can enter Korean universities through various types of programs, such as e-learning-centered cyber universities, online education courses in general universities, joint degree programs between Korean and overseas universities, English Track programs, etc.

The academic calendar in Korea is divided into two semesters a year, generally starting in March, the spring semester, and sometimes starting in September, the fall semester. In order to apply for admission to the semester, you must apply 4-6 months before the beginning of the semester. Since the application and selection period differs by university and curriculum, it is recommended to inquire directly with the university you wish to apply for.

The admission procedure is as follows.

1. Select the university (course)
2. Submit the application form and required documents
3. Pay the tuition
4. Obtain the admission letter
5. Apply for and obtain a visa

* A visa is applied for at the Korean embassy in the jurisdiction of the applicant's country of residence or final school location.

Documents required for visa issuance include an application for visa issuance (application for certificate of visa eligibility), a certificate of admission, an educational institution business registration certificate, documents proving the final academic background, and documents verifying finances.

※ Foreign language documents issued abroad need notarized translation or Apostille confirmation.

Student visas are divided into regular degree programs and non-degree programs.

- The Student (D-2) visa is for education at a junior college or higher, study or research activities at an academic research institution, and the duration of one stay is 2 years.
- The General Trainee (language training: D-4) visa is for training or research activities at educational institutions, companies, or organizations other than institutions that are eligible for student (D-2), and the duration of one stay is 2 years (6 months for language trainees).



STUDYING ABROAD EXPENSES

(Budget)

In order to prepare for a stable and successful study abroad life, it is very important to have a well-planned budget.

Tuition fees (per semester) vary widely by university and curriculum. The average in USD is \$1,500 for language courses, \$2,600 for junior colleges, \$4,500 for universities, and \$6,000 for graduate schools.

Depending on your academic performance, you may be eligible for a university scholarship, and the scholarship ratio for international students is 25-30% at universities and 70% at graduate schools.

The cost of living (monthly) can vary greatly from person to person, but in terms of the essential cost of living, it is an average of USD 910.

The cost of one meal at university cafeterias and restaurants near the university district is \$4 to \$11, and the basic fare for a regular bus or subway is \$1 to \$3.6. With the transfer discount system in the metropolitan area, you can receive a discount if you transfer to another route or other means of transportation within the area.



Type	\$ (USD)
Housing	391
Transportation	57
Communication expenses (Mobile phone, Internet usage)	77
Insurance	121
Food Expenses	264
Total	910

IMMIGRATION SYSTEM

(Foreign Resident Registration)

In order for foreign students to maintain a stable life in Korea, it is very important that they are well acquainted with the immigration system and procedures.

All foreigners who intend to stay in Korea for more than 90 days after entry must apply for a foreign resident registration (within 90 days of entry).

To obtain a foreign residence card, make a reservation by visiting the local Immigration Office (Tel. 1345) with a photo, passport, and proof of residence (certificate of enrollment) and apply.

In order to smoothly prepare for life in Korea, such as activating a mobile phone, opening a bank account, renting a place, and signing up for insurance, a foreign residence card is usually required, so it is advisable to obtain it as soon as possible.

Even after initial registration, if any changes* related to the stay occur, you must apply for change and issuance within the deadline.

* Change of status of stay, an extension of sojourn period, change of address, change of registration, re-issuance of lost, etc.

By registering as a member on the Hi Korea website (www.hikorea.go.kr), you can conveniently handle immigration-related requests online.

Most Korean universities (International Office) are actively supporting international students' immigration-related affairs in various ways, so if you have any difficulties, you can contact your university for help.

Detailed regulations and systems related to visas and stay can be found on the website of the Ministry of Justice Immigration Policy Headquarters (www.immigration.go.kr/immigration/index.do).



HEALTH INSURANCE SYSTEM

Health care is the most important thing when studying and living in a foreign country (abroad) after leaving your home country (hometown).

Korea is a country that is well equipped with professional medical staff, technology, and advanced systems, enough for people to come from overseas for medical tourism for treatment and surgery. In addition to university hospitals and large general hospitals, there are many primary medical institutions (clinics) for each treatment area in each region, so you can conveniently receive treatment and prescriptions in your area of residence.

In addition, Korea has a well-established national health insurance system.

All citizens can enjoy medical benefits such as health checkups (free), medical treatment, surgery, and nursing services at a relatively easy, fast, and low cost.

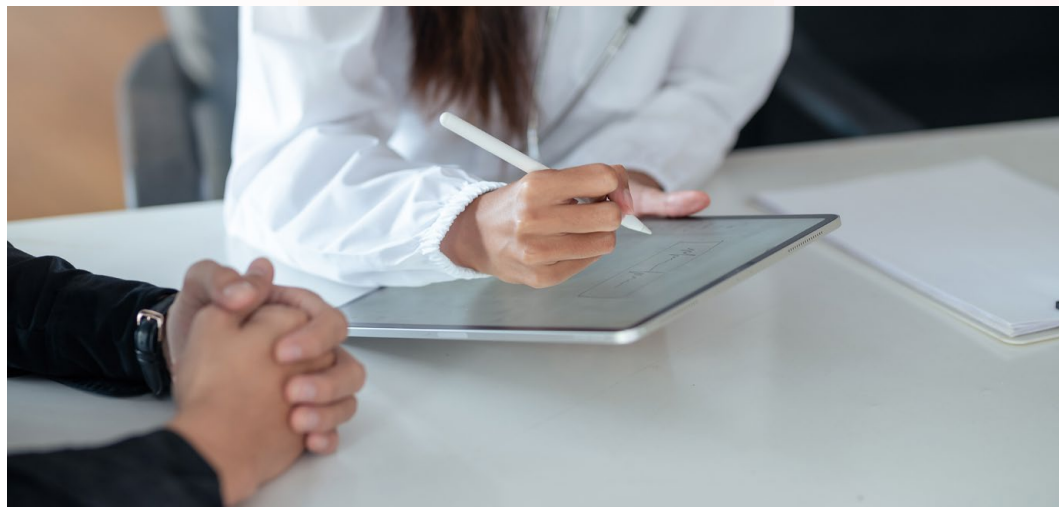
Since 2021, to expand national-level health support for international students, the Korean government has included them as mandatory subscribers to the National Health Insurance.

Student visa (D-2) holders are automatically enrolled after foreign resident registration, and language training visa (D-4) holders are registered 6 months after the date of entry (those staying less than 6 months are not eligible for registration).

If you join the National Health Insurance (regional insured) and pay a monthly premium*, you can receive the same medical service benefits as Koreans.

* It is usually around \$121 per month. The amount may be adjusted due to system improvement or individual income.

For more information on health insurance for international students, please visit the National Health Insurance website (www.nhis.or.kr).



EMPLOYMENT



In principle, employment of foreign students is not allowed, however, if certain conditions are met, they may engage in part-time work limited to simple labor tasks typically performed by students.

Holders of Student (D-2) and Language Training (D-4-1, D-4-7) visas must obtain a part-time work permit from the immigration office if they wish to do part-time work.

The allowed working hours range from 10 to 35 hours per week, depending on factors such as academic performance, Korean language proficiency, and the type of degree program.

After completing a degree, those seeking employment in

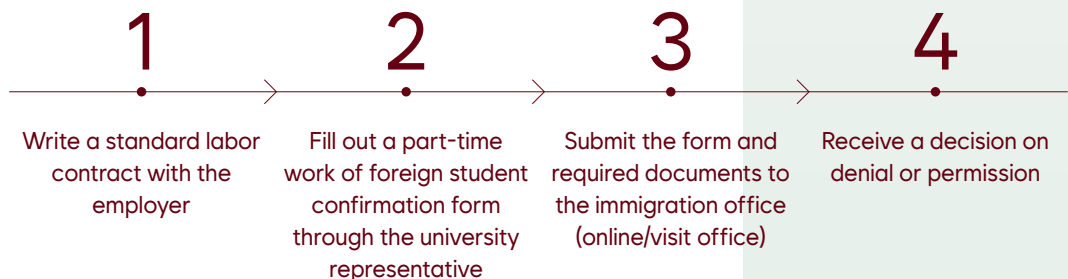
Korea can change their visa status to Job Seeker (D-10) to look for a job. When you are officially employed, it shall be changed to a Special Occupation (E-7).

※ The job seeker visa is valid for 6 months and can be extended for up to 2 years.

As the number of institutions and companies seeking global talent is increasing, the Korean government, regional (local) institutions, and universities are also gradually expanding employment information provision services for foreign students.

The Korean government also hosts an annual Job Fair, and the Study in Korea website (www.studyinkorea.go.kr) provides job opportunities specifically for foreign students.

The permit procedure is as follows.



INTERNATIONAL STUDENT SERVICE CENTER

More than 200,000 international students from all over the world studying and living in Korea.

The largest number of international students come from China, Vietnam, Mongolia, Uzbekistan, and Nepal, which are neighboring Asian countries. Recently, students from various countries from North America, Central and South America, the Middle East, and Africa to Europe, are coming to Korea to study.

The National Institute for International Education, run by the Korean government, has established and is operating the International Student Service Center to support the ever-increasing number of international students in their successful study life and stable settlement.

Additionally, you can access information about studying in Korea and receive consultation without language barriers through the Study in Korea website, which supports 29 languages, and the AI chatbot('KORI'), which operates in 100 languages.

At the Service Center of the National Institute of International Education, the following services are provided.



Customized consulting in 8 languages
(visit, phone, email)



Operating on-campus consultation
for international students
(visiting each region and university)



Holding the Job Fair for International
Students



Networking and support with the In-
ternational Student Associations in
Korea



Publishing guidebooks for internation-
al students



People are the national competitiveness!



Korea has achieved the fastest economic growth in world history.

The source of the amazing change called the 'Miracle on the Han River' was 'Education'.

It was through 'excellent human resources' that a nation devastated by war and lacking in natural resources become the only country to escape from being one of the world's poorest countries, transform from an ODA aid recipient into a donor country, and proudly rise to the ranks of advanced nations.

Korea is continuously nurturing talents in each field with its excellent education system and high enthusiasm for education and is also striving to nurture global talents who will lead future generations and the era of the fourth industrial revolution.

Everyone has different concerns.

We have different languages, cultures, dreams, and talents, but we will think together, dream together, and work together.

The National Institute for International Education supports the dreams of international students.





Unlock your future in Korea:
Make Your Dreams a Reality!

STUDY IN KOREA

Year of Issue 2025

National Institute for International Education

(13557) 191, Jeongjail-ro, Bundang-gu, Seongnam-si, Gyeonggi-do, Korea

www.niied.go.kr

+82-2-3668-1300